

How to Apply Stage Make-Up

Primary Ballet, Ballet 1 and Ballet 2

Must wear Blush & Lip color - See colors listed below

Ballet 3 - 10

Must wear all regular stage make-up - from the list below

False Eyelashes:

All female dancers Ballet 4 & up are required to wear false eyelashes

Any age dancer, who wishes to look professional, may wear false eyelashes

Foundation:

Choose a full coverage foundation that matches your dancer's skin color

If your foundation is not a powder finish, follow with either a translucent powder or one that matches the foundation

Blush:

Blush should be a rose, peachy, pink color



Lips:

Dancers should wear a long lasting, smudge-proof lipstick in a true red shade

**Eye shadow:**

Choose both light, frosty pink or cream and brown shadow

**Eyeliner:**

Black, may be liquid or pencil

Brows:

If Brows are light, they may need to be enhanced with a medium brown eyebrow pencil or powder

Start with foundation and setting powder

Apply blush to the apples of the cheeks and sweep upward toward top of ear

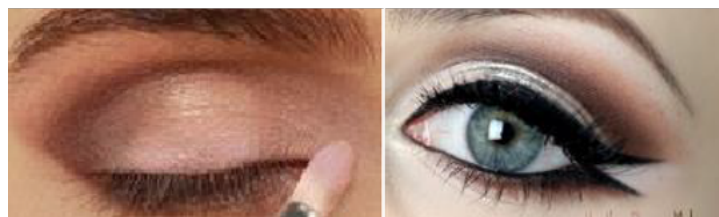
Sweep the light color shadow over entire lid up to brow and the brown in the crease

Line the upper and lower eye with black eyeliner, taking the liner beyond the outer eye to just under the outer edge of the brow

Finish with lashes and black mascara

Any kind of false eyelashes may be used

Mascara should be applied after lashes



For a step by step video tutorial:

https://youtu.be/AciNLc_vePM?si=y0gKh-yjIEoW6t2l